



**REGIONAL SPECIALISED METEOROLOGICAL CENTRE-TROPICAL CYCLONES, NEW DELHI
TROPICAL WEATHER OUTLOOK**

DEMS-RSMC TROPICAL CYCLONES NEW DELHI DATED 01.11.2021

TROPICAL WEATHER OUTLOOK FOR NORTH INDIAN OCEAN (THE BAY OF BENGAL OF BENGAL AND ARABIAN SEA) VALID FOR NEXT 120 HOURS ISSUED AT 0600 UTC OF 01.11.2021 BASED ON 0300 UTC OF 01.11.2021.

BAY OF BENGAL:

YESTERDAY'S LOW PRESSURE AREA OVER SRI LANKA OFF TAMILNADU COAST NOW LIES OVER COMORIN AREA & ADJOINING NORTH SRI LANKA COAST. ASSOCIATED CYCLONIC CIRCULATION EXTENDS UPTO 3.1 KM ABOVE MEAN SEA LEVEL. IT IS LIKELY TO EMERGE INTO SOUTHEAST ARABIAN SEA DURING NEXT 48 HOURS. THEREAFTER IT IS LIKELY TO MOVE NORTH-NORTHWESTWARDS AND BECOME MORE MARKED DURING THE SUBSEQUENT 48 HOURS

SCATTERED TO BROKEN LOW AND MEDIUM CLOUDS WITH EMBEDDED INTENSE TO VERY INTENSE CONVECTION LAY OVER TAMILNADU, PALK STRAIT, GULF OF MANNAR, COMORIN, SRI LANKA AND NEIGHBOURHOOD IN ASSOCIATION WITH LOW PRESSURE AREA (LPA) OVER THE AREA. MINIMUM CLOUD TOP TEMPERATURE MINUS 90⁰C.

SCATTERED LOW AND MEDIUM CLOUDS WITH EMBEDDED INTENSE TO VERY INTENSE CONVECTION LAY OVER WESTCENTRAL & SOUTH BAY OF BENGAL AND ANDAMAN SEA. SCATTERED LOW AND MEDIUM CLOUDS WITH EMBEDDED MODERATE TO INTENSE CONVECTION LAY OVER NORTHWEST BAY OF BENGAL, SOUTH ODISHA COAST & EASTCENTAL BAY OF BENGAL.

PROBABILITY OF CYCLOGENESIS (FORMATION OF DEPRESSION) DURING NEXT 120 HRS:

24 HOURS	24-48 HOURS	48-72 HOURS	72-96 HOURS	96-120 HOURS
NIL	NIL	NIL	NIL	NIL

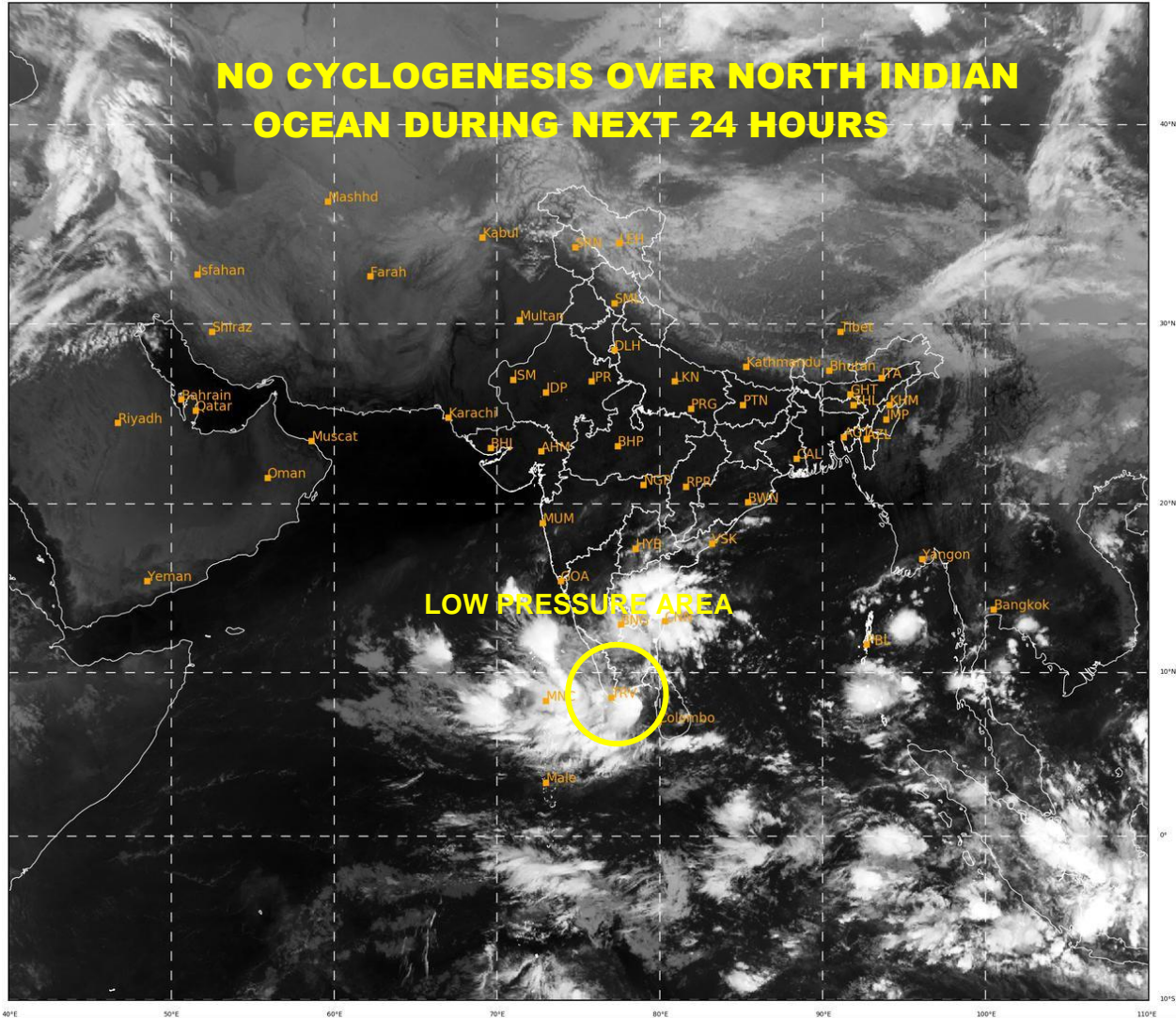
ARABIAN SEA:

SCATTERED LOW AND MEDIUM CLOUDS WITH EMBEDDED INTENSE TO VERY INTENSE CONVECTION LAY OVER EASTCENTRAL & SOUTHEAST ARABIAN SEA AND COMORIN REGION.

PROBABILITY OF CYCLOGENESIS (FORMATION OF DEPRESSION) DURING NEXT 120 HRS:

24 HOURS	24-48 HOURS	48-72 HOURS	72-96 HOURS	96-120 HOURS
NIL	NIL	NIL	NIL	NIL

REMARKS: NIL



519

939

IMD,DELHI